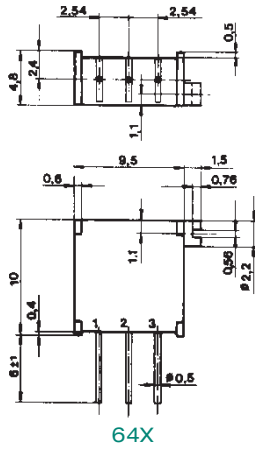
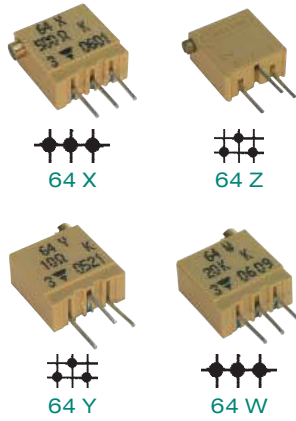


Multi - Turn Cermet Trimmers

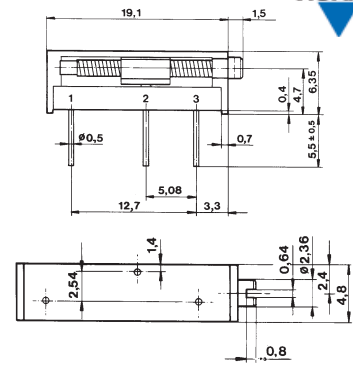
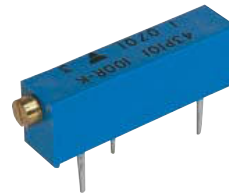
64 Series



Technical parameters	64
Number of Turns - mechanical	23±5
Number of Turns - electrical	21±2
Power Rating at 70°C	0,5W
Max. Working Voltage	250V
Range of Values	10R...2M0
Tolerance	±10%
Temperature Coefficient	±100ppm/°C
Insulation Voltage	1000Vef
Temperature Range	-55...+125°C
Package	50 pcs (tube)
How to order	64 X 100 R

Value	64 X	64 Y	64 Z	64 W
10R	O 57984	S 18022		O 18021
50R	O 57985	S 18024		O 18040
100R	O 30157	S 18025	O 57986	O 18041
200R	O 30158	S 18026	O 57987	O 18042
500R	S 30159	S 18027	O 20452	S 18043
1K	O 30160	S 18028	S 20453	S 18044
2K	O 30161	S 18029	S 20454	S 18045
5K	S 30162	S 18030	O 20454	S 18046
10K	S 30163	S 18031	S 20455	S 18047
20K	S 30164	S 18032	O 20456	S 18048
50K	O 30165	S 18033	S 20457	S 18049
100K	O 30166	S 18034	S 20458	S 18050
200K	O 30167	S 18035	O 20459	S 18051
500K	O 30168	S 18036	O 20460	S 18052

43P Series

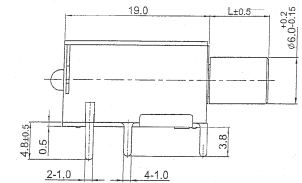


Technical parameters	43 P
Number of Turns - mechanical	18±5
Number of Turns - electrical	15±1
Power Rating at 70°C	0,5W
Max. Working Voltage	250V
Range of Values	10R...2M0
Resistance Tolerance	±10%
Temperature Coefficient	100ppm/°C
Insulation Voltage	1000Vef
Temperature Range	-55...+125°C
Package	25 pcs (tube)
How to order	43 P 100 R

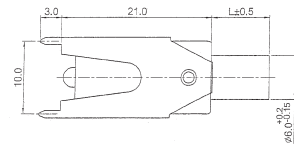
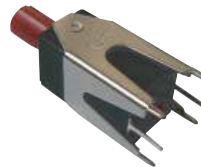
Value	43 P	Value	43 P	Value	43 P
10R	S 19877	1K	S 19883	50K	S 19888
50R	S 19879	2K	S 19884	100K	S 19889
100R	S 19880	5K	S 19885	200K	S 19890
200R	S 19881	10K	S 19886	500K	S 19891
500R	S 19882	20K	S 19887	1M	S 19892

RF Attenuators

Type AT10PHF



Type AT10VYF



Technical parameters	AT10PHF	AT10VYF
Nominal Attenuation	20dB	20dB
Impedance	75 Ω	75 Ω
Max. frequency	800 MHz	800 MHz
Number of Turns	endless	endless
Max. Voltage	50V	50V
Power Rating	0,02W	0,02W
Shaft diameter	9mm	9mm
Colour	red	red
Manufact. Part Number	AT10PHF-B-9SRB-3,5Y-20	AT10PVYF-B-9SRB-3,5Y-20
How to order	AT PHF	AT VYF

Part No.	Ord.No
S AT10PHF	52520
S AT10VYF	52522

