

Temperature and Humidity Sensors

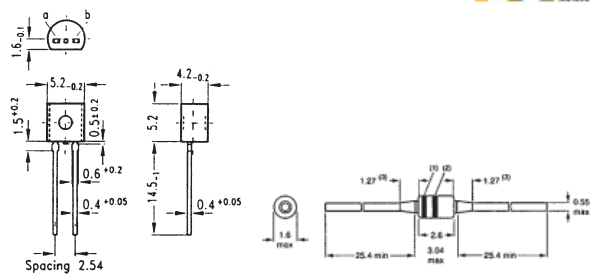
DS Series



Part No.	Description
DS 1629 S	Sensor temp.+RTC-2WIRE SO8
DS 1821+	Sensor temp. -55....125°C PR35
DS 18S20+	Sensor temp. -55....125°C TO92

Part No.	Ord. No.
o DS 1629 S	7886
o DS 1821+	50891
s DS 18S20+	3199

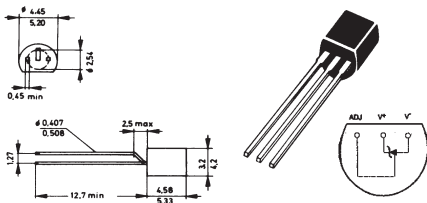
KTY Series



Part No.	Description
KTY 81-110	Sensor temp. 1000R/25°C ±1% TO92
KTY 81-120	Sensor temp. 1000R/25°C ±2% TO92
KTY 81-210	Sensor temp. 2000R/25°C ±1% TO92
KTY 83-110	Sensor temp. 1000R/25°C ±1% DO34

Part No.	Ord. No.
s KTY 81-110	20754
s KTY 81-120	20755
s KTY 81-210	20756
s KTY 83-110	20758

LM Series



Part No.	Description
LM 335 Z	Sensor temp. -40...+110°C TO92
LM 35 CZ	Sensor temp. -40...+110°C TO92
LM 35 DM/NOPB	Sensor temp. -55....150°C SO8
LM 35 DZ	Sensor temp. 0...+100°C TO92

Part No.	Ord. No.
s LM 335 Z	17777
s LM 35 CZ	20587
o LM 35 DM/NOPB	53211
s LM 35 DZ	41211

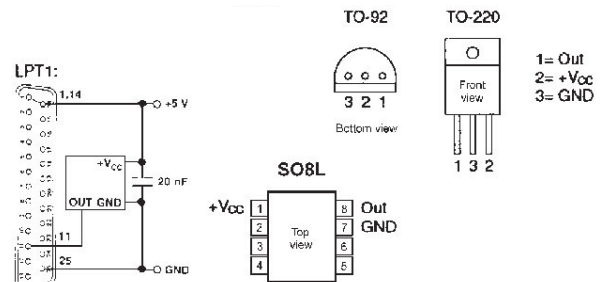
SHT Series



Part No.	Description
SHT 11	Sensor humidity and temp. 5% I2C SMD
SHT 71	Sensor rel. humidity 0-100% RH
SHT 75	Sensor humidity and temp. 2% I2C SIL4

Part No.	Ord. No.
o SHT 11	47760
s SHT 71	44912
o SHT 75	45894

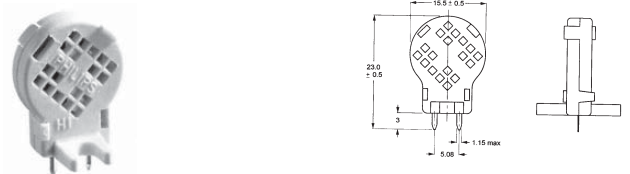
SMT Series



Part No.	Description
SMT-160-30-220	Sensor temp.PWM -45+130°C/±1,7 5V/0,2mA TO220
SMT-160-30-92	Sensor temp.PWM vjst.-45+130°C/±2 5V/0,2mA TO92
SMT-160-30-SOIC	Sensor temp.PWM -45+130°C/±1,5 5V/0,2mA SO8

Part No.	Ord. No.
s SMT-160-30-220	45230
s SMT-160-30-92	42525
o SMT-160-30-SOIC	45231

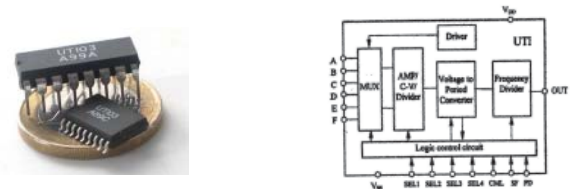
Humidity - 1



Measuring range: 10-90%RH
Capacity at 25°C: 122pF
Sensitivity 12 to 75%: 0,4pF
Temperature range: -25°C to +85°C

Part No.	Ord. No.
s Humidity-1	20266

Converters for Sensors



Part No.	Description
UTI 03 DIL16	Converter for sensor SMT, DIP16

Part No.	Ord. No.
s UTI 03 DIL16	45230