

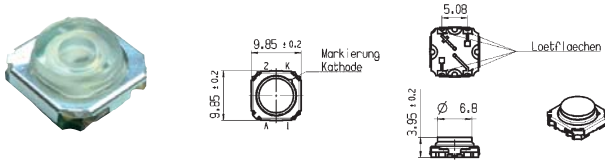
Tact and Key Switches



One-pole pushbuttons with gold-plated contacts for certain switching. Maximal switching voltage and current 28V/100mA, activation power 0,7N, upthrow 1,6mm, lifetime min. > 1 mil. cycles..

3006.xxxx

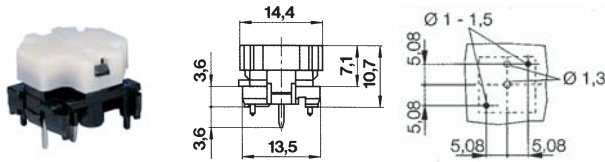
Low height even with integrated LED, extremely large actuator surface
Dimensions 10x10x4mm
Max. 28VDC / 50mA, upthrow 0,9mm, lifetime min. 100 000 cycles.



Part No.	Ord. No.	Description
S 3006.2101	52528	yellow LED
O 3006.2102	52548	orange LED
S 3006.2112	75923	red LED
O 3006.2107	57335	green LED

6425.0101, 6425.4121

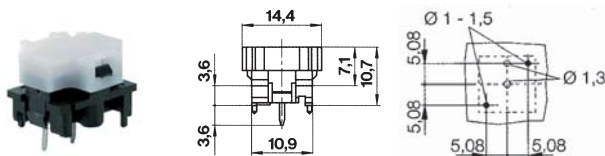
Single-pole normally open contact with or without LEDs,
frame 13,55x13,55mm.



Part No.	Ord. No.	Description
S 6425.0101	1325	hole for LED
S 6425.4121	1328	yellow LED

MARQ.6425.1101

frame 11x13,55mm



Part No.	Ord. No.
S 6425.1101	1326

MARQ.825.0xx.021

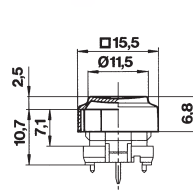
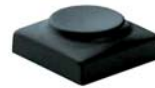
Square key caps with whitw characters, 19x19mm, grey colour, suitable for 6425 series



Part No.	Ord. No.	Mark
S 825.001.021	1472	"1"
S 825.002.021	1473	"2"
S 825.003.021	1474	"3"
S 825.004.021	1475	"4"
S 825.005.021	1476	"5"
S 825.006.021	1477	"6"
S 825.007.021	1478	"7"
S 825.008.021	1479	"8"
S 825.009.021	1480	"9"
S 825.010.021	1481	"0"
S 825.011.021	1482	"."
S 825.053.021	1483	"C"

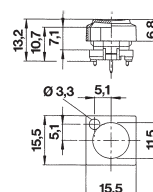
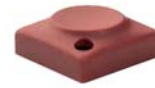
826.000.0xx

Square key cap 16x16mm, diferent colours, suitable for 6425 series without LED window



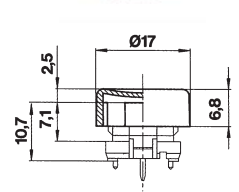
829.000.0xx

Square key cap 16x16mm, diferent colours, suitable for 6425 series with LED window



840.000.0xx

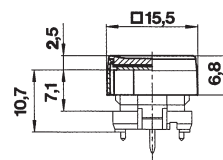
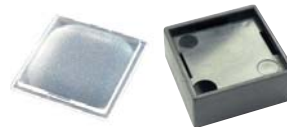
Round key cap, diferent colours, diameter 17mm, heigth 6,8mm, suitable for 6425 series.



Part No.	Ord. No.	Colour
S 826.000.011	1484	black
S 826.000.031	1486	grey
S 826.000.071	1487	red
S 826.000.081	1488	yellow
S 826.000.091	1489	green
S 829.000.011	1513	black
S 829.000.031	1515	grey
S 829.000.071	1516	red
S 840.000.011	1539	black
S 840.000.061	1541	beige
S 840.000.071	1542	red
S 840.000.091	1543	green

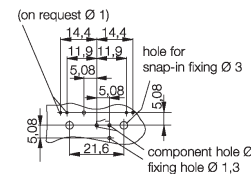
MARQ.835.900.013

Two-part key cap with snap-on transparent caps.
16x16mm, heigth 6,8mm,
Suitable for 6425 series key switches with or without LED



MARQ.190.059.013

Recommended appliance cut-out and perforation pattern component side.
Suitable for 6425 series.



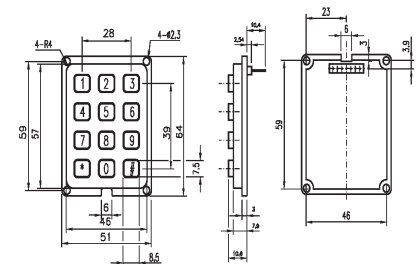
Part No.	Ord. No.
S 835.900.013	1535
S 190.059.013	531

Keypads

ECO 12 150 06

Matrix circuit keypad in a black mounting case with white keys and black markings.

Dimensions: 64 x 51 mm. Activation power 1,3 N, upthrow 1,4mm.
Temperature range -20°C to +60°C.



Part No.	Ord. No.
S ECO 12 150 06	50414

