

HAMMOND Extruded Aluminium Enclosures



1455 Series

Key Features:

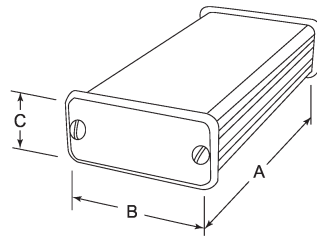
- Designed to house P.C. boards or for equipment interfacing.
- Sized for standard Eurocards.
- P.C. boards mount horizontally by sliding into internal slots extruded into the enclosure body.
- Rugged body constructed from extruded aluminum with a minimum thickness of .06" (1.5 mm).
- Extruded body includes a slide removable "belly" plate - except in smaller "C" sizes (ie..1455C801, 1455C1201 sizes)

Includes:

- Two aluminum end panels
- Two black ABS plastic bezels (your option to install)
- Extruded, anodized aluminum body (choice of either clear or black)
- All hardware and rubber feet

NOTE: Recommended screw torque is 5 lb/in

1455 B

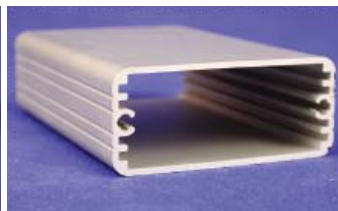


AL

Part No.	Description, dimensions A x B x C
1455B1002	AL enclosure with plastic ends 100x71,7x19mm
1455B1002BK	AL enclosure with plastic ends 100x71,7x19mm, black
1455B1202	AL enclosure with plastic ends 120x71,7x19mm
1455B1202BK	AL enclosure with plastic ends 120x71,7x19mm, black
1455B802	AL enclosure with plastic ends 80x71,7x19mm
1455B802BK	AL enclosure with plastic ends 80x71,7x19mm black

Part No.	Ord.No.
S 1455B1002	60193
S 1455B1002BK	60195
S 1455B1202	60197
S 1455B1202BK	60198
O 1455B802	73311
O 1455B802BK	73312

1455 C

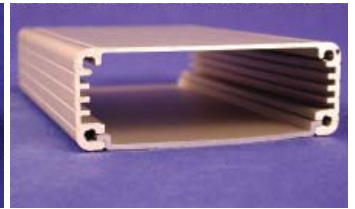


AL

Part No.	Description, dimensions A x B x C
1455C1201	AL enclosure with metal ends 120x54x23mm
1455C1201BK	AL enclosure 120x54x23mm black
1455C1202	AL enclosure with plastic ends 120x54x23mm
1455C801	AL enclosure 80x54x23mm
1455C801BK	AL enclosure 80x54x23mm, black
1455C802	AL enclosure with plastic ends 80x54x23mm
1455C802BK	AL enclosure with plastic ends 80x54x23mm black

Part No.	Ord.No.
S 1455C1201	56098
O 1455C1201BK	73310
S 1455C1202	56097
S 1455C801	56096
S 1455C801BK	60414
O 1455C802	56679
O 1455C802BK	70110

1455 J

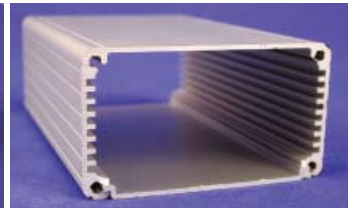


AL

Part No.	Description, dimensions A x B x C
1455J1201	AL enclosure 120x78x27mm
1455J1201BK	AL enclosure 120x78x27mm, black
1455J1202	AL enclosure with plastic ends 120x78x27mm
1455J1202BK	AL enclosure with plastic ends 120x78x27mm, black

Part No.	Ord.No.
S 1455J1201	58252
S 1455J1201BK	60417
S 1455J1202	55538
S 1455J1202BK	55731

1455 K



AL

Part No.	Description, dimensions A x B x C
1455K1201	Al enclosure 120x78x43mm
1455K1201BK	Al enclosure 120x78x43mm black
1455K1202	AL enclosure with plastic ends 120x78x43mm
1455K1202BK	AL enclosure with plastic ends 120x78x43mm black

Part No.	Ord.No.
S 1455K1201	58253
O 1455K1201BK	58069
S 1455K1202	71196
O 1455K1202BK	73313

1455 L



AL

Part No.	Description, dimensions A x B x C
1455L1201	AL enclosure 120x103x30,5mm
1455L1201BK	AL enclosure 120x103x30,5mm black
1455L1202	AL enclosure with plastic ends 120x103x30,5mm
1455L1202BK	AL enclosure with plastic ends 120x103x30mm black
1455L1601	AL enclosure 160x103x30,5mm
1455L2201	AL enclosure 220x103x30,5mm
1455LFBK	Aluminium holder for 1455L, black 39x103mm

Part No.	Ord.No.
O 1455L1201	58254
O 1455L1201BK	60580
O 1455L1202	73315
O 1455L1202BK	73314
S 1455L1601	60507
S 1455L2201	71197
S 1455LFBK	72932