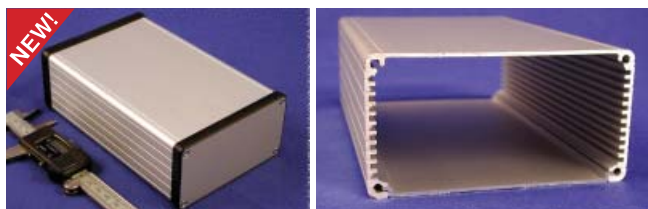


1455 N



AL

Part No.	Description, dimensions A x B x C
1455N1201	AL enclosure 120x103x53mm
1455N1201BK	AL enclosure 120x103x53mm black
1455N1202	AL enclosure 120x103x53mm
1455N1202BK	AL enclosure with plastic ends 120x103x53mm, black
1455N1601	AL enclosure with metal ends 160x103x53mm
1455N1601BK	AL enclosure 160x103x53mm black
1455N1602	AL enclosure 160x103x53mm
1455N1602BK	AL enclosure with plastic ends 160x103x53mm, Black
1455N2201	AL enclosure 220x103x53mm
1455N2201BK	AL enclosure 220x103x53mm black

Part No.	Ord.No.
O 1455N1201	58255
O 1455N1201BK	59994
O 1455N1202	60467
S 1455N1202BK	59972
S 1455N1601	54706
O 1455N1601BK	59995
S 1455N1602	57016
S 1455N1602BK	59973
S 1455N2201	59981
O 1455N2201BK	56010

1455 Q

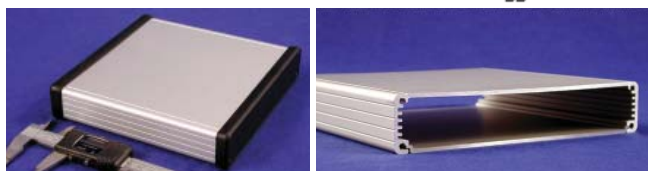


AL

Part No.	Description, dimensions A x B x C
1455Q1601	AL enclosure 160x120,5x51,5mm

Part No.	Ord.No.
S 1455Q1601	59983

1455 R

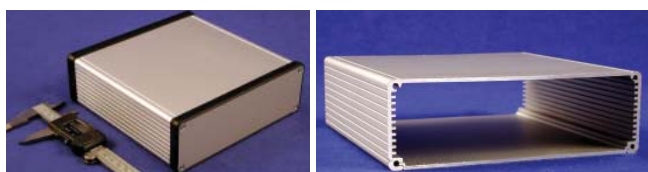


AL

Part No.	Description, dimensions A x B x C
1455R1602	AL enclosure with plastic ends 160x160x30,5mm

Part No.	Ord.No.
S 1455R1602	54707

1455 T



AL

Part No.	Description, dimensions A x B x C
1455T1601	AL enclosure with metal ends 160x160x51,5mm
1455T2201	AL enclosure with metal ends 220x160x51,5mm

Part No.	Ord.No.
S 1455T1601	55052
S 1455T2201	59984

We will supply also enclosures with colour plastic bezels - on the request.



1457 Series



Key Features:

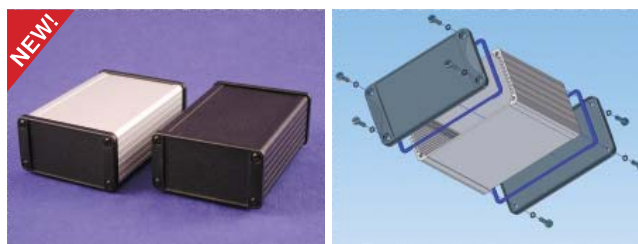
- Watertight - heavy duty extruded enclosures designed to house P.C. boards or for equipment interfacing.
- Sized for standard Eurocards.
- P.C. boards mount horizontally by sliding into internal slots extruded into the enclosure body.
- Rugged body constructed from one piece, extruded aluminum with a minimum thickness of .06" (1.5 mm).
- Extruded aluminum body includes a recessed area for labels or membrane keypad.
- End panels are rugged - yet easy to machine - diecast aluminum with full perimeter self-adhesive gaskets.
- Designed to meet IP 65 ratings.
- Choice of two versions - end panels without flange or flanged lid (for shelf or wall mounting).

Includes:

- Two diecast aluminum end panels
- Extruded, aluminum body
- Two closed cell polyethylene foam - end plate gaskets & rubber "O" rings for assembly screws.

All hardware and self-adhesive feet.

NOTE: Recommended screw torque is 5 lbf/in



IP65 AL

1457 C



IP65 AL

Part No.	Description, dimensions A x B x C
1457C1201	AL enclosure 120x59x30,9mm IP65
1457C801	AL enclosure 80x59x30,9mm IP65
1457C801BK	AL enclosure 80x59x30,9mm Black IP65

Part No.	Ord.No.
O 1457C1201	73299
O 1457C801	73296
O 1457C801BK	73298