

PCBs

Single Sided Copper PCBs



HPCU Series

Copper board, high-value base material, brush-finished, high dimensional accuracy.
Cu plating: 35 µm
Material thickness: 1,5 mm

Part No.	Ord. No.
S HPCU 100x75	50380
S HPCU 160x100	7953

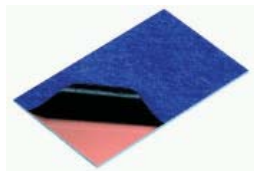


EPCU Series

Single-sided coated, glass-filled reinforced epoxy insulation board, 1,5mm thick, 35µm Cu layer, to manufacture PCBs.
Material: FR4

Part No.	Ord. No.
S EPCU 160x100	8247
S EPCU 200x160	8248
S EPCU 300x200	8249

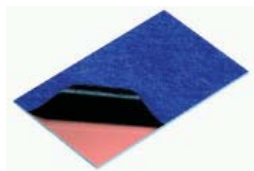
Single-Sided Photoresist PCBs



HP1P Series

Made of FR2 base material (laminated paper), single-sided photoresist, 1x35µm Cu layer, used to manufacture PCBs.
Material: FR2

Part No.	Ord. No.
S HP1P 160x100	5047
S HP1P 200x150	5048



EP1P Series

High quality base material, 1,5mm strength, 35µm Cu layer, absolute photoresist, colour photo enamel, very fine resolution, with light transmitting protective foil, fixed adhesion of the copper foil right up to the edges, exact fixed measurements.
Material: FR4

Part No.	Ord. No.
S EP1P 75x100	8252
S EP1P 160x100	8253
S EP1P 200x150	46435



Aluminium PCB 100x150

Prototype board, 1,5mm thick, 35µm Cu layer
Material: Aluminium
Designed for heat-stressed joints.

Part No.	Ord. No.
O ALUMINIUM PCB 100x150	56125

Double - Sided Copper PCBs



EP2CU Series

Double-sided coated, glass-filled reinforced epoxy insulation board, 1,5mm thick, 2x35µm Cu layer, to manufacture PCBs
Material: FR4

Part No.	Ord. No.
S EP2CU 160x100	8250
S EP2CU 300x200	8251

Double -Sided Photoresist PCBs

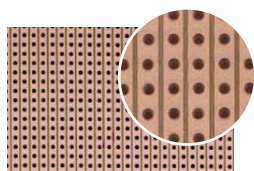


EP2P Series

High quality base material, 1,5mm strength, 2x35µm Cu layer, absolute photoresist, colour photo enamel, very fine resolution, with light transmitting protective foil, fixed adhesion of the copper foil right up to the edges, exact fixed measurements.
Material: FR4

Part No.	Ord. No.
S EP2P 160x100	9043
O EP2P 200x150	47179
S EP2P 300x200	8604

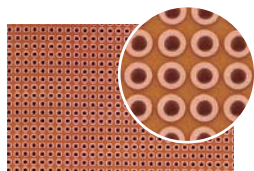
Single-Sided Strips PCBs



H25 SR160

Experimental board 160x100x1,5mm, standardized width 100mm, made of laminated paper, single-sided Cu layer, 39 strips in 2,54mm pitch, holes Ø 1,0mm.
Material: FR2

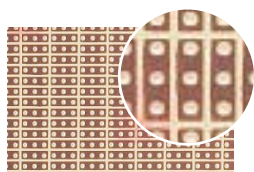
Part No.	Ord. No.
S H25 SR160 160x100	5053



H25 PR160

Single-sided PCB with 39 rows of soldering points in 2,54mm pitch, holes Ø 1,0mm, Dimensions: 160x100x1,5mm.
Material: FR2

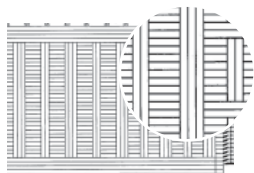
Part No.	Ord. No.
S H25 PR160 160x100	5054



H25 PS160

Experimental board, standardized width 100mm, made of laminated paper, single-sided Cu layer, solder points in 2,54mm pitch to form a triple chain, suitable for IC circuits.
Dimensions: 160x100x1,5mm
Material: FR2

Part No.	Ord. No.
S H25 PS160 160x100	5055



UP 941 EP

Microprocessor-universal drilled board with Cu single-sided layer, made of epoxy resin glass fabric, for building and testing circuit solutions, ideal for small series, with earthing strips for sockets. For 14 to 40 pin, IC-socket in suitable in dual inline pitch, PCB track on the component side.
Socket: 32-/64-/96-pin, DIN 41612, pitch: 2,54mm
37-pin, direct, pitch: 2,54mm
Dimensions: 160x100x1,5mm
Material: FR4

Part No.	Ord. No.
S UP 941 EP 160x100	5049