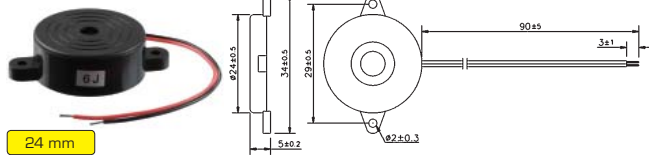


PT 2060 WQ

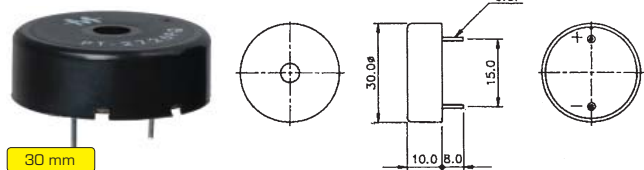


24 mm

Technical Parameters	PT 2060 WQ
Resonant Frequency	6,0 kHz
Max. Operating Voltage	30 VDC
SPL at 5V	90 dB/10cm
Current Consumption	1,5 mA
Capacitance	12 000 pF
Operating Temperature	-20°C to +70°C

Part No.	Ord.No.
S PT 2060 WQ	5088

PT 2726 P

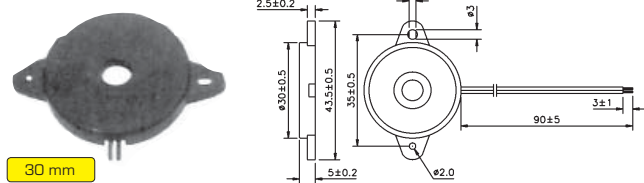


30 mm

Technical Parameters	PT 2726 P
Resonant Frequency	2,5 kHz
Max. Operating Voltage	30 VDC
SPL at 5V	90 dB/10cm
Current Consumption	1,5 mA
Capacitance	30 000 pF
Operating Temperature	-20°C to +70°C

Part No.	Ord.No.
S PT 2726 P	4924

PT 2745 WQ

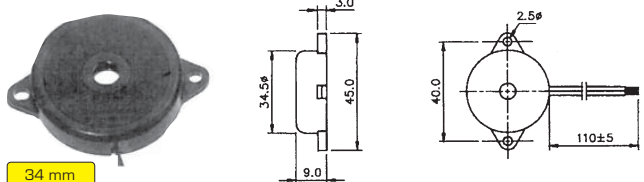


30 mm

Technical Parameters	PT 2745 WQ
Resonant Frequency	4,5 kHz
Max. Operating Voltage	30 VDC
SPL at 5V	90 dB/10cm
Current Consumption	1,5 mA
Capacitance	20 000 pF
Operating Temperature	-20°C to +90°C

Part No.	Ord.No.
S PT 2745 WQ	5087

PT 3110 WQ

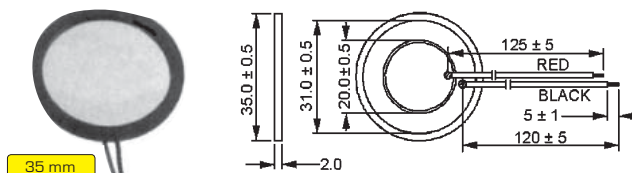


34 mm

Technical Parameters	PT 3110 WQ
Resonant Frequency	1,1 kHz
Max. Operating Voltage	30 VDC
SPL at 5V	85 dB/10cm
Current Consumption	2 mA
Capacitance	48 000 pF
Operating Temperature	-20°C to +90°C

Part No.	Ord.No.
S PT 3110 WQ	4923

PB 3112 Q



35 mm

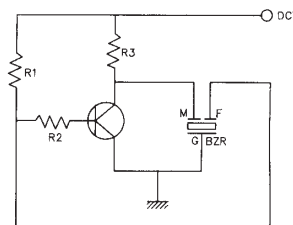
Technical Parameters	PB 3112 Q
Resonant Frequency	1,1 kHz
Max. Operating Voltage	40 VDC
SPL at 5V	75 dB/10cm
Current Consumption	1,5 mA
Capacitance	48 000 pF
Operating Temperature	-20°C to +70°C

Part No.	Ord.No.
S PB 3112 Q	4925

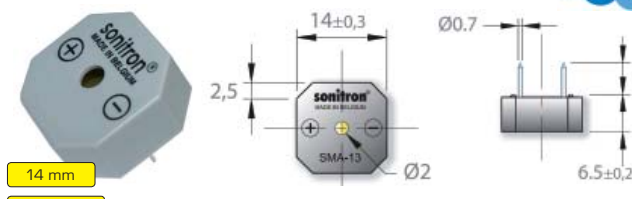
Piezo Buzzers with Driver Sonitron SMA



The Sonitron Multi-Application buzzers are low cost commercial grade components for large volume applications. The SMA series are designed to meet various requirements such as Current Consumption, voltage, sound pressure, mounting methods, connection, dimensions and packaging. The buzzers have a built-in oscillator generating their working frequency. They produce a highly reliable tone signal giving either an extremely clear and penetrating tone or a soft sound for non-aggressive signals.



SMA-13-P7,5 14mm



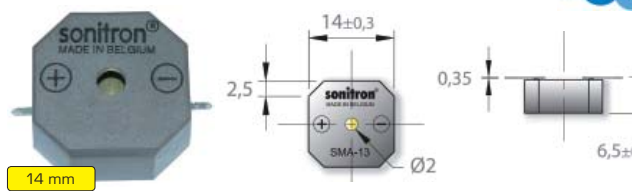
14 mm

PCB PINS

Technical Parameters	SMA-13-P7,5
Sound Frequency	3,0 kHz
Operating Voltage	1,5 - 24 VDC
SPL at 12V	75 dB/30cm
Current Consumption	1,8 mA
Operating Temperature	-20°C to +70°C

Part No.	Ord.No.
S SMA-13-P7,5	64085

SMA-13-S



14 mm

SMD

Technical Parameters	SMA-13-S
Sound Frequency	3,0 kHz
Operating Voltage	1,5 - 24 VDC
SPL at 12V	75 dB/30cm
Current Consumption	1,8 mA
Operating Temperature	-20°C to +70°C

Part No.	Ord.No.
S SMA-13-S	64064